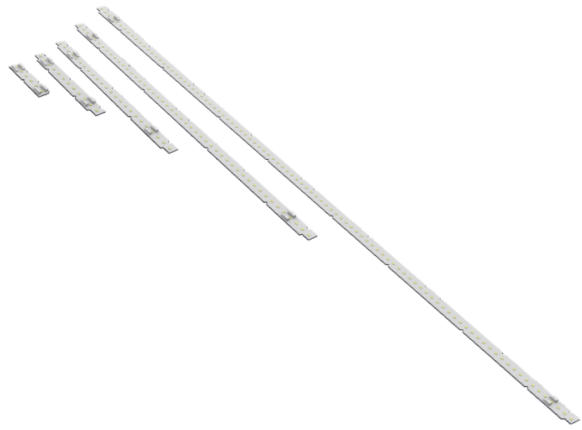


REGULAR series (CRI>90) Linear LED modules



- Samsung LEDs.
- Various length options (70 mm, 140 mm, 280 mm, 560 mm, 1120 mm).
- 20 mm width.
- Low color temperature tolerances (MacAdam 3).
- Wide range of colors (6500K, 4000K, 3000K, 2700K).
- High color rendering index CRI >90.
- Ideal for linear and panel lights.
- Perfectly uniform light, even if several LED modules are used together in one line.
- Complies with Zhaga standard.
- Easy installation.
- Long life time: >50 000 hours.
- 5-year warranty.



EXTENSIVE USE OF OPTIONS

Lighting fixtures
manufacturing



Commercial lighting
projects



Residential
use



REGULAR SERIES LINEAR LED MODULE SPECIFICATIONS ARE PROVIDED BELOW (ON PAGES 2-6).

FOR OUR CLIENTS CONVIENCE WE ALSO PRODUCE AND DESIGN CUSTOM MADE LED MODULES, CHOOSE YOUR OWN:

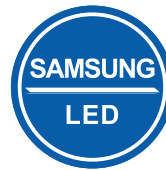
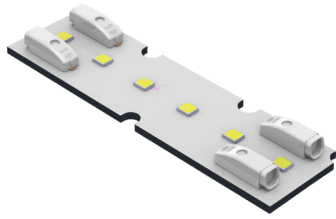
- Color;
- Power;
- Voltage;
- Design and dimensions;
- Components;
- Etc.

FOR MORE INFORMATION, PLEASE CONTACT US.



REGULAR series (CRI>90)

Linear LED module (70 mm length)

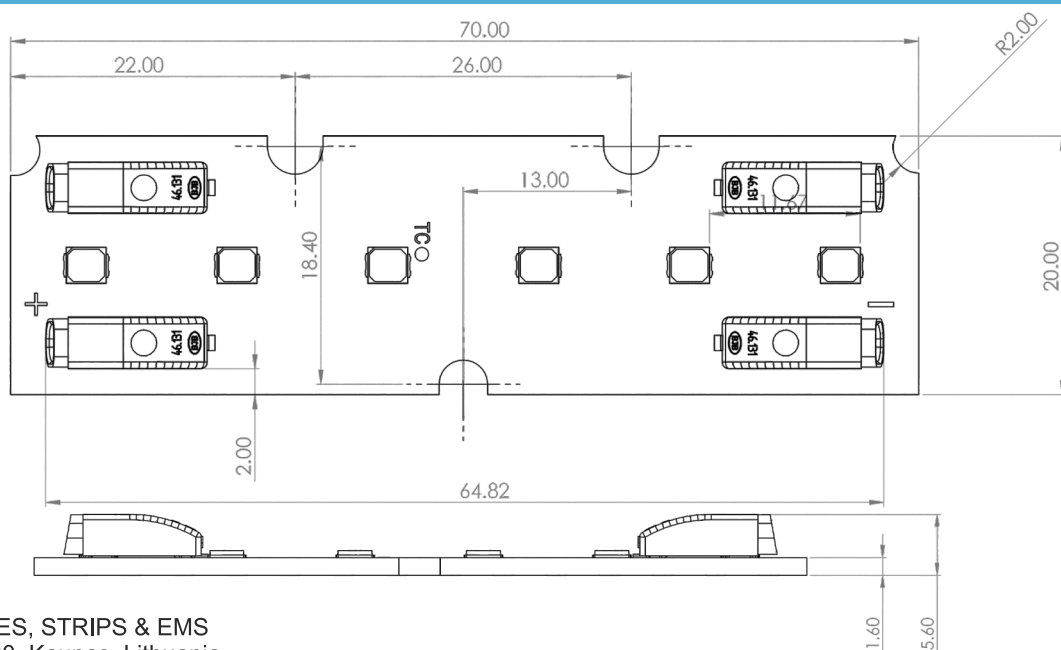


TECHNICAL DATA



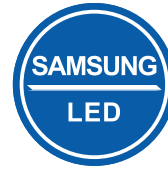
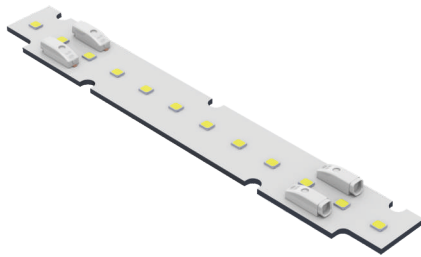
Model	AM-L70W20-3p2sRB-XW											
Dimensions, mm	70x20x5.6											
Current, mA	250			350				500				
Typical voltage, V	~5.6			~5.72				~5.9				
Power, W	1.4			2.0				2.95				
LED quantity, pcs	6											
Color	Cold white (-CW)	Neutral white (-NW)	Warm white (-WW)	Warm white (-WWW)	Cold white (-CW)	Neutral white (-NW)	Warm white (-WW)	Warm white (-WWW)	Cold white (-CW)	Neutral white (-NW)	Warm white (-WW)	Warm white (-WWW)
Color temperature	6500K	4000K	3000K	2700K	6500K	4000K	3000K	2700K	6500K	4000K	3000K	2700K
Luminous flux, Lm	217	217	206	202	298	298	285	278	412	412	393	384
Luminous efficacy, Lm/W	155.0	155.0	148.0	144.0	148.9	148.9	142.1	138.7	140.5	140.5	134.1	130.9
Color rendering index (CRI)	>90											
Operating temperature	-40°C – +85°C											
Temperature at Tc point	+45°C											
Light angle	120°											
MAX current, mA	600											
MAX luminous flux, Lm	486	486	464	453	486	486	464	453	486	486	464	453
Connection	4 x 1 pole connector. For 0.2-0.75 mm ² wires											

TECHNICAL DRAWING (mm)



REGULAR series (CRI>90)

Linear LED module (140 mm length)

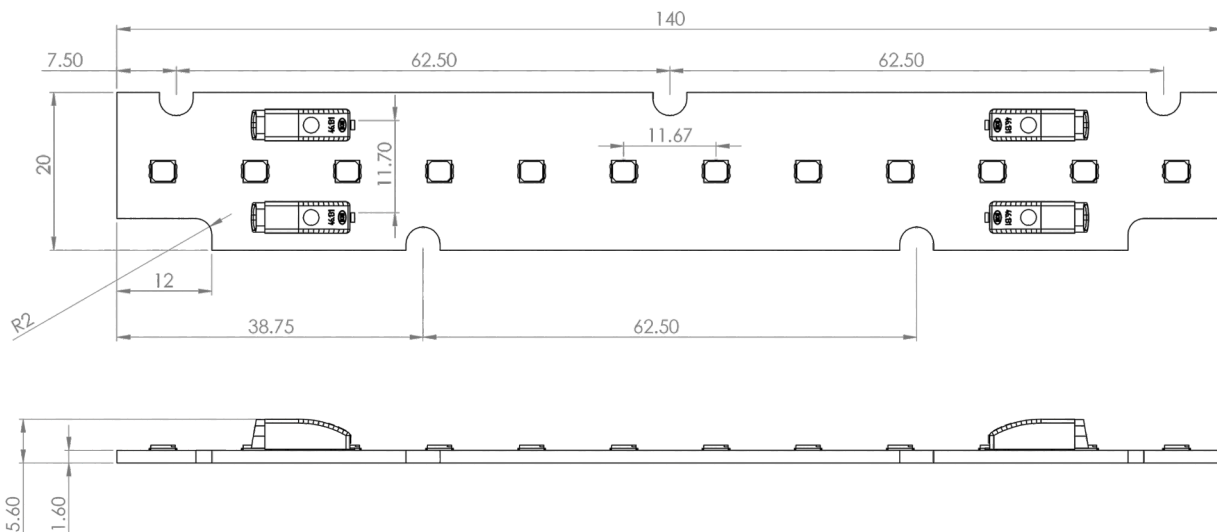


TECHNICAL DATA



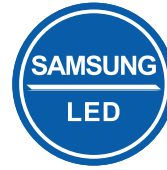
Model	AM-L140W20-3p4sRB-XW											
Dimensions, mm	140x20x5.6											
Current, mA	250			350				500				
Typical voltage, V	~11.20			~11.44				~11.88				
Power, W	2.8			4.0				5.9				
LED quantity, pcs	12											
Color	Cold white (-CW)	Neutral white (-NW)	Warm white (-WW)	Warm white (-WWW)	Cold white (-CW)	Neutral white (-NW)	Warm white (-WW)	Warm white (-WWW)	Cold white (-CW)	Neutral white (-NW)	Warm white (-WW)	Warm white (-WWW)
Color temperature	6500K	4000K	3000K	2700K	6500K	4000K	3000K	2700K	6500K	4000K	3000K	2700K
Luminous flux, Lm	434	434	413	404	597	597	569	556	824	824	787	768
Luminous efficacy, Lm/W	155.0	155.0	148.0	144.0	148.9	148.9	142.1	138.7	140.5	140.5	134.1	130.9
Color rendering index (CRI)	>90											
Operating temperature	-40°C – +85°C											
Temperature at Tc point	+45°C											
Light angle	120°											
MAX current, mA	600											
MAX luminous flux, Lm	973	973	928	906	973	973	928	906	973	973	928	906
Connection	4 x 1 pole connector. For 0.2-0.75 mm ² wires											

TECHNICAL DRAWING (mm)



REGULAR series (CRI>90)

Linear LED module (280 mm length)

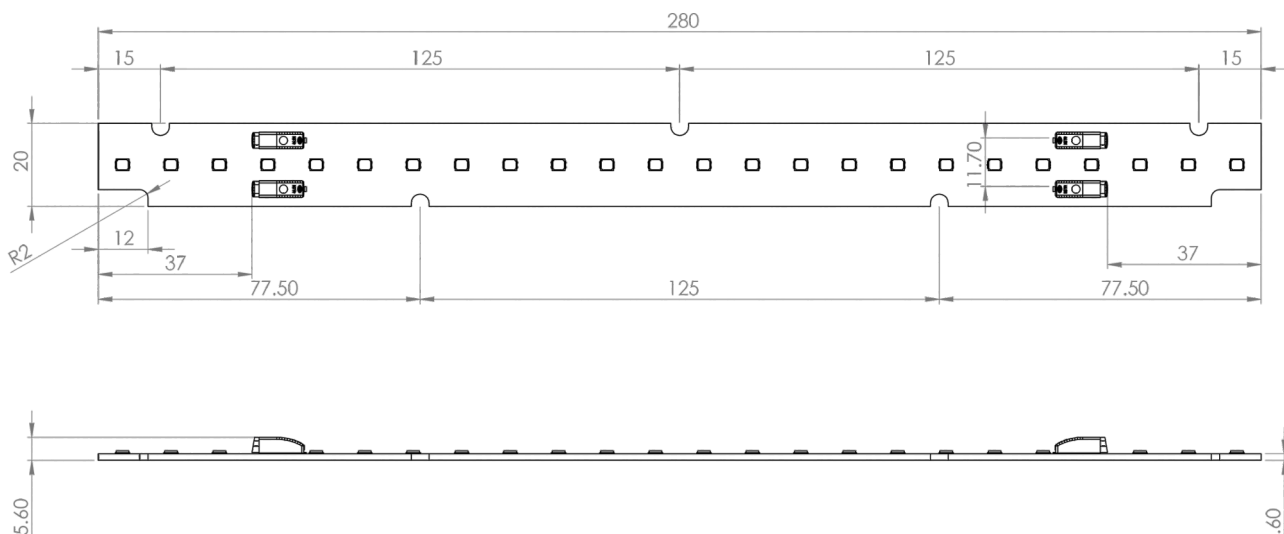


TECHNICAL DATA



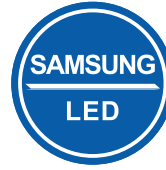
Model	AM-L280W20-3p8sRB-XW											
Dimensions, mm	280x20x5.6											
Current, mA	250			350			500					
Typical voltage, V	~22.40			~22.88			~23.60					
Power, W	5.6			8.0			11.8					
LED quantity, pcs	24											
Color	Cold white (-CW)	Neutral white (-NW)	Warm white (-WW)	Warm white (-WWW)	Cold white (-CW)	Neutral white (-NW)	Warm white (-WW)	Warm white (-WWW)	Cold white (-CW)	Neutral white (-NW)	Warm white (-WW)	Warm white (-WWW)
Color temperature	6500K	4000K	3000K	2700K	6500K	4000K	3000K	2700K	6500K	4000K	3000K	2700K
Luminous flux, Lm	868	868	825	809	1193	1193	1139	1112	1649	1649	1574	1536
Luminous efficacy, Lm/W	155.0	155.0	148.0	144.0	148.9	148.9	142.1	138.7	140.5	140.5	134.1	130.9
Color rendering index (CRI)	>90											
Operating temperature	-40°C – +85°C											
Temperature at Tc point	+45°C											
Light angle	120°											
MAX current, mA	600											
MAX luminous flux, Lm	1945	1945	1857	1813	1945	1945	1857	1813	1945	1945	1857	1813
Connection	4 x 1 pole connector. For 0.2-0.75 mm ² wires											

TECHNICAL DRAWING (mm)



REGULAR series (CRI>90)

Linear LED module (560 mm length)

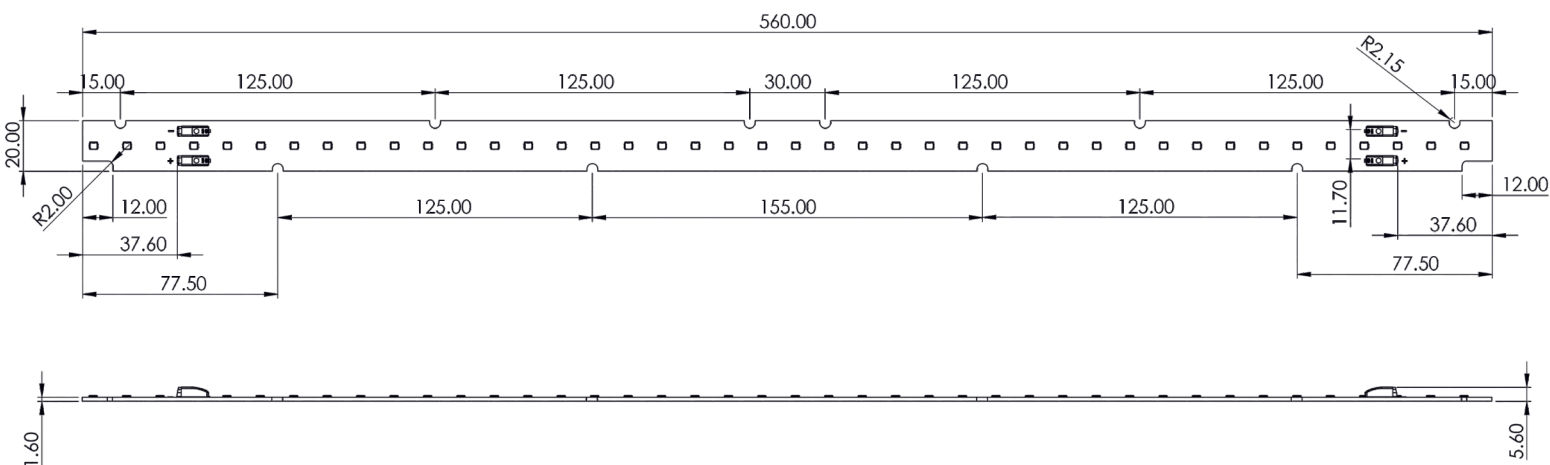


TECHNICAL DATA



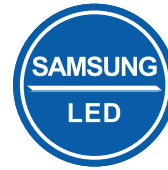
Model	AM-L560W20-3p16sRB-XW											
Dimensions, mm	560x20x5.6											
Current, mA	250			350			500					
Typical voltage, V	~44.80			~45.76			~47.2					
Power, W	11.2			16.0			23.6					
LED quantity, pcs	48											
Color	Cold white (-CW)	Neutral white (-NW)	Warm white (-WW)	Warm white (-WWW)	Cold white (-CW)	Neutral white (-NW)	Warm white (-WW)	Warm white (-WWW)	Cold white (-CW)	Neutral white (-NW)	Warm white (-WW)	Warm white (-WWW)
Color temperature	6500K	4000K	3000K	2700K	6500K	4000K	3000K	2700K	6500K	4000K	3000K	2700K
Luminous flux, Lm	1735	1735	1651	1617	2386	2386	2278	2224	3298	3298	3148	3073
Luminous efficacy, Lm/W	155.0	155.0	148.0	144.0	148.9	148.9	142.1	138.7	140.5	140.5	134.1	130.9
Color rendering index (CRI)	>90											
Operating temperature	-40°C – +85°C											
Temperature at Tc point	+45°C											
Light angle	120°											
MAX current, mA	600											
MAX luminous flux, Lm	3890	3890	3714	3625	3890	3890	3714	3625	3890	3890	3714	3625
Connection	4 x 1 pole connector. For 0.2-0.75 mm ² wires											

TECHNICAL DRAWING (mm)



REGULAR series (CRI>90)

Linear LED module (1120 mm length)



TECHNICAL DATA



Model	AM-L1120W20-3p32sRB-XW											
Dimensions, mm	1120x20x5.6											
Current, mA	250			350				500				
Typical voltage, V	~89.60			~91.52				~94.4				
Power, W	22.4			32.0				47.2				
LED quantity, pcs	96											
Color	Cold white (-CW)	Neutral white (-NW)	Warm white (-WW)	Warm white (-WWW)	Cold white (-CW)	Neutral white (-NW)	Warm white (-WW)	Warm white (-WWW)	Cold white (-CW)	Neutral white (-NW)	Warm white (-WW)	Warm white (-WWW)
Color temperature	6500K	4000K	3000K	2700K	6500K	4000K	3000K	2700K	6500K	4000K	3000K	2700K
Luminous flux, Lm	3470	3470	3301	3235	4773	4773	4556	4447	6595	6595	6296	6146
Luminous efficacy, Lm/W	155.0	155.0	148.0	144.0	148.9	148.9	142.1	138.7	140.5	140.5	134.1	130.9
Color rendering index (CRI)	>90											
Operating temperature	-40°C – +85°C											
Temperature at Tc point	+45°C											
Light angle	120°											
MAX current, mA	600											
MAX luminous flux, Lm	7781	7781	7427	7250	7781	7781	7427	7250	7781	7781	7427	7250
Connection	4 x 1 pole connector. For 0.2-0.75 mm ² wires											

TECHNICAL DRAWING (mm)

