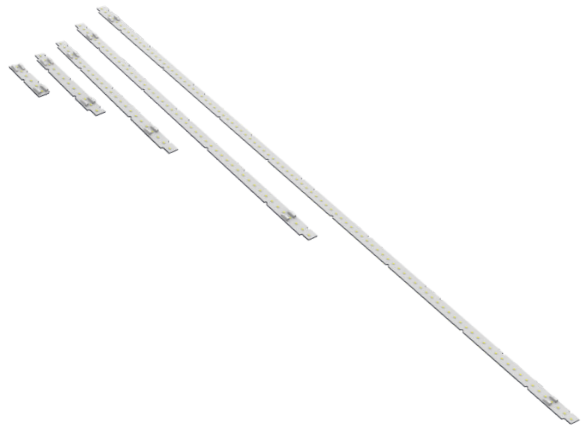


REGULAR series (CRI>80) Linear LED modules



- Samsung LEDs.
- Various length options (70 mm, 140 mm, 280 mm, 560 mm, 1120 mm).
- 20 mm width.
- Low color temperature tolerances (MacAdam 3).
- Full range of colors (5000K, 4000K, 3000K).
- High color rendering index CRI >80.
- Ideal for linear and panel lights.
- Perfectly uniform light, even if several LED modules are used together in one line.
- Complies with Zhaga standard.
- Easy installation.
- Long life time: >50 000 hours.
- 5-year warranty.



EXTENSIVE USE OF OPTIONS

Lighting fixtures
manufacturing



Commercial lighting
projects



Residential
use



REGULAR SERIES LINEAR LED MODULE SPECIFICATIONS ARE PROVIDED BELOW (ON PAGES 2-6).

FOR OUR CLIENTS CONVIENCE WE ALSO PRODUCE AND DESIGN CUSTOM MADE LED MODULES, CHOOSE YOUR OWN:

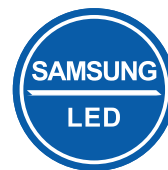
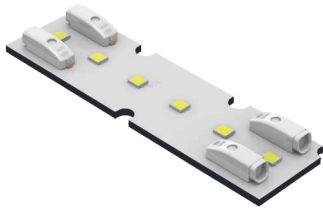
- Color;
- Power;
- Voltage;
- Design and dimensions;
- Components;
- Etc.

FOR MORE INFORMATION, PLEASE CONTACT US.



REGULAR series (CRI>80)

Linear LED module (70 mm length)

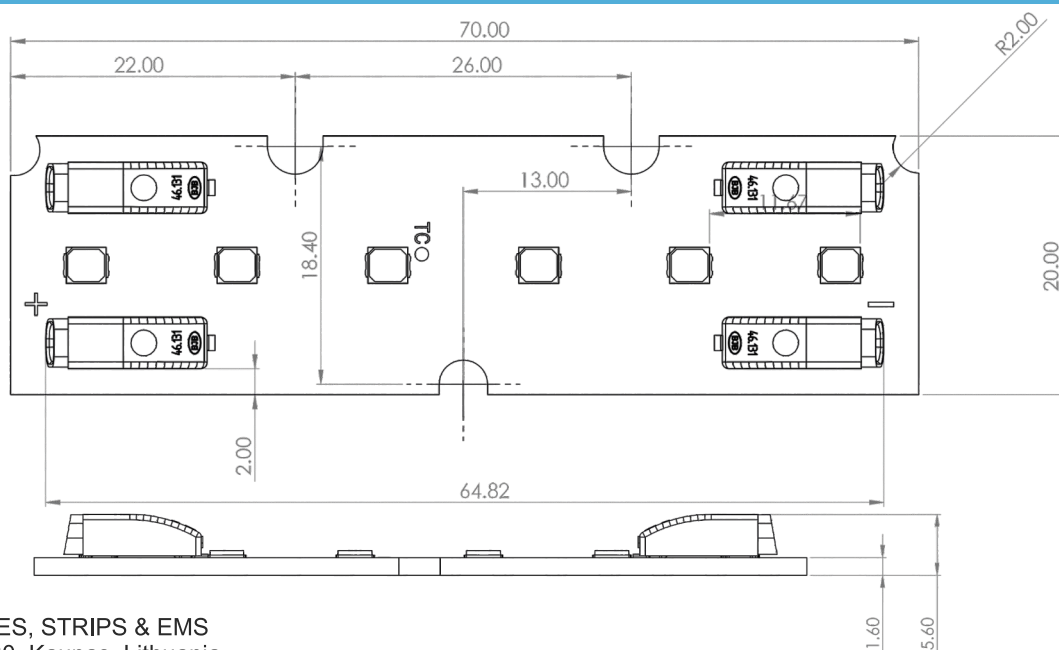


TECHNICAL DATA



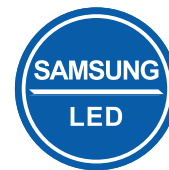
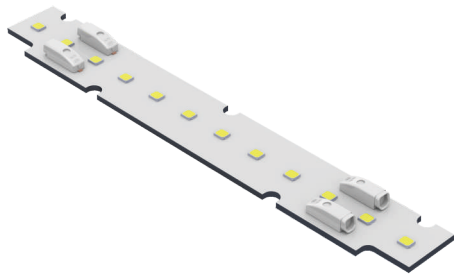
Model	AM-L70W20-3p2sRA-XW								
Dimensions, mm	70x20x5.6								
Typical current, mA	250			350			500		
Typical voltage, V	~5.60			~5.72			~5.90		
Power, W	1.4			2.0			3.0		
LED quantity, pcs	6								
Color	Pure white (-PW)	Neutral white (-NW)	Warm white (-WW)	Pure white (-PW)	Neutral white (-NW)	Warm white (-WW)	Pure white (-PW)	Neutral white (-NW)	Warm white (-WW)
Color temperature	5000K	4000K	3000K	5000K	4000K	3000K	5000K	4000K	3000K
Luminous flux, Lm	259	255	245	357	353	337	495	489	467
Luminous efficacy, Lm/W	185.5	183.2	174.9	178.2	175.9	168.0	168.0	165.9	158.4
Color rendering index (CRI)	>80								
Operating temperature	-40°C – +85°C								
Temperature at Tc point	+45°C								
Light angle	120°								
MAX current, mA	600								
MAX luminous flux, Lm	582	575	549	582	575	549	582	575	549
Connection	4 x 1 pole connectors. 0.2-0.75mm ² wires								

TECHNICAL DRAWING (mm)



REGULAR series (CRI>80)

Linear LED module (140 mm length)

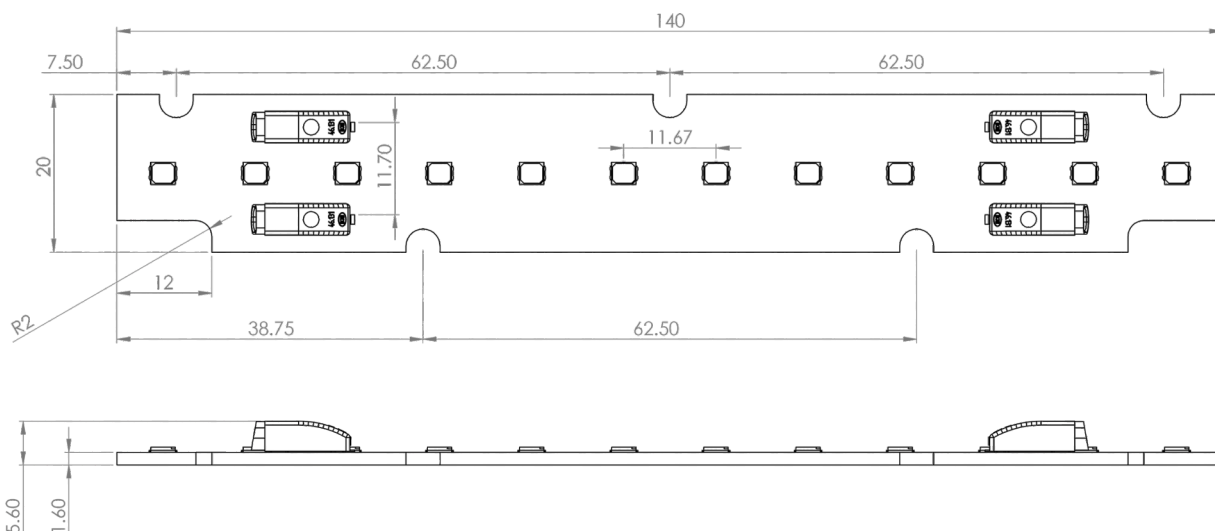


TECHNICAL DATA



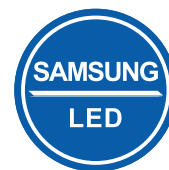
Model	AM-L140W20-3p4sRA-XW								
Dimensions, mm	140x20x5.6								
Typical current, mA	250			350			500		
Typical voltage, V	~11.20			~11.44			~11.80		
Power, W	2.8			4.0			5.9		
LED quantity, pcs	12								
Color	Pure white (-PW)	Neutral white (-NW)	Warm white (-WW)	Pure white (-PW)	Neutral white (-NW)	Warm white (-WW)	Pure white (-PW)	Neutral white (-NW)	Warm white (-WW)
Color temperature	5000K	4000K	3000K	5000K	4000K	3000K	5000K	4000K	3000K
Luminous flux, Lm	517	511	490	714	705	673	990	978	934
Luminous efficacy, Lm/W	185.5	183.2	174.9	178.2	175.9	168.0	168.0	165.9	158.4
Color rendering index (CRI)	>80								
Operating temperature	-40°C – +85°C								
Temperature at Tc point	+45°C								
Light angle	120°								
MAX current, mA	600								
MAX luminous flux, Lm	1164	1149	1098	1164	1149	1098	1164	1149	1098
Connection	4 x 1 pole connectors. 0.2-0.75mm ² wires								

TECHNICAL DRAWING (mm)



REGULAR series (CRI>80)

Linear LED module (280 mm length)



TECHNICAL DATA



Model	AM-L280W20-3p8sRA-XW								
Dimensions, mm	280x20x5.6								
Typical current, mA	250			350			500		
Typical voltage, V	~22.40			~22.88			~23.60		
Power, W	5.6			8.0			11.8		
LED quantity, pcs	24								
Color	Pure white (-PW)	Neutral white (-NW)	Warm white (-WW)	Pure white (-PW)	Neutral white (-NW)	Warm white (-WW)	Pure white (-PW)	Neutral white (-NW)	Warm white (-WW)
Color temperature	5000K	4000K	3000K	5000K	4000K	3000K	5000K	4000K	3000K
Luminous flux, Lm	1035	1022	979	1428	1410	1347	2328	2299	1868
Luminous efficacy, Lm/W	185.5	183.2	174.9	178.2	175.9	168.0	168.0	165.9	158.4
Color rendering index (CRI)	>80								
Operating temperature	-40°C – +85°C								
Temperature at Tc point	+45°C								
Light angle	120°								
MAX current, mA	600								
MAX luminous flux, Lm	2328	2299	2196	2328	2299	2196	2328	2299	2196
Connection	4 x 1 pole connectors. 0.2-0.75mm ² wires								

TECHNICAL DRAWING (mm)

